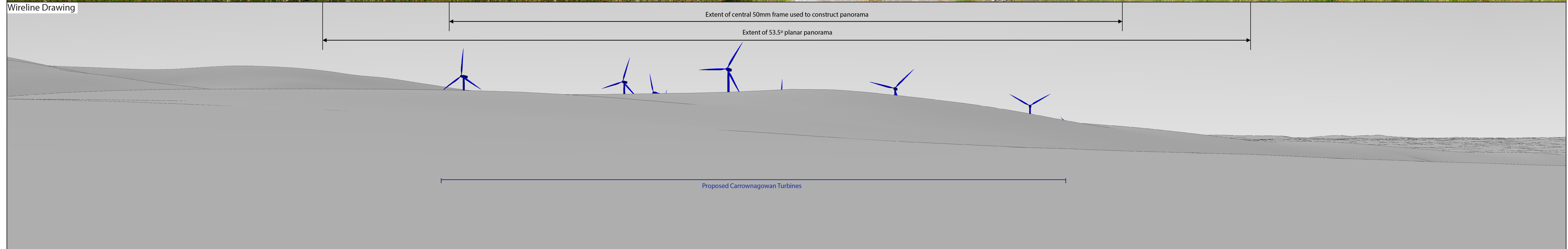


Baseline Photograph

This image provides landscape and visual context only

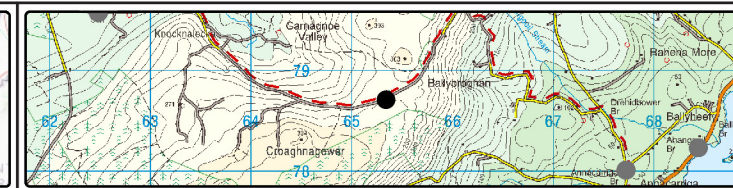
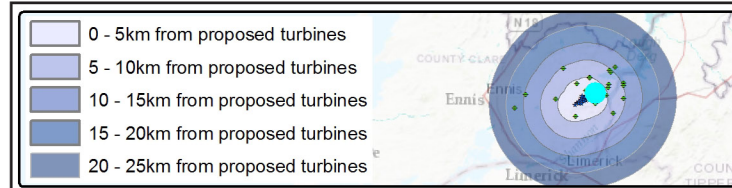


Wireline Drawing



Carrownagowan Wind Farm – Visual Impact Assessment

Viewpoint 14
Ballylaghan - Bog Road



Viewing Instructions
Angle of View of Panorama: 90° (cylindrical projection)
Principal Distance (printed at 84 x 29.7cm): 52.2cm

Viewpoint Location & Capture Information
Location (ITM): 565301.38, 678752.49
Camera Level (Metres Above Ordnance Datum): 292.9
Date & Time: 23/08/2019, 9:53am
Weather Conditions: Sunny, Intermittent Cloud

Visibility Information
Distance to Nearest Turbine (km): 2.2
Number of Carrownagowan Nacelles Visible: 6
Direction of View (From Grid North): 238°

Camera Information
Camera: Canon 5D Mark III
Lens: Canon EF 50mm f/1.4 USM
Focal Length: 50mm

Visuals prepared by **innovision**

Sligo Airport Business Park
Strandhill
Sligo
www.innovision.ie
+353(0)71 - 912 8220

Photomontage

View flat at a comfortable arm's length

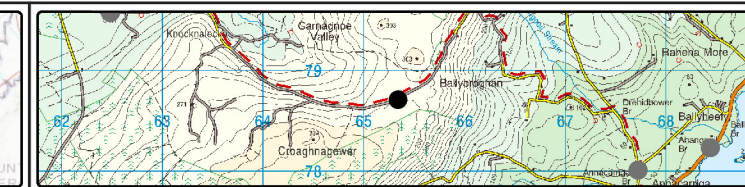
Proposed Carrownagowan Turbines



Carrownagowan Wind Farm – Visual Impact Assessment

Viewpoint 14

Ballylaghan - Bog Road



Viewing Instructions
 Angle of View of Panorama: 53.5° (planar projection)
 Principal Distance (printed at 84 x 29.7cm): 81.25cm
Depicted Turbine Specifications
 Hub Height 101m, Tip Height 169m Rotor Diam. 136m

Viewpoint Location & Capture Information
 Location (ITM): 565301.38, 678752.49
 Camera Level (Metres Above Ordnance Datum): 292.9
 Date & Time: 23/08/2019, 9:53am
 Weather Conditions: Sunny, Intermittent Cloud

Visibility Information
 Distance to Nearest Turbine (km): 2.2
 Number of Carrownagowan Nacelles Visible: 6
 Direction of View (From Grid North): 238°

Camera Information
 Camera: Canon 5D Mark III
 Lens: Canon EF 50mm f/1.4 USM
 Focal Length: 50mm

Visuals prepared by **innovision** 

Sligo Airport Business Park
 Strandhill
 Sligo
 www.innovision.ie
 +353(0)71 - 912 8220